

ND.2 Mazda MX-5 Cup Homologation Document

Version #15 2022•07•20



Flis Performance, LLC.
106 Anita Ave • Daytona, FL 32114
(386)-256-7021
www.FlisPerformance.com

Contents

ND.2 Mazda MX-5 Cup Homologation Document.....	1
1) General Notes:.....	2
2) Body.....	4
3) Brakes.....	5
4) Cooling: Water, Engine Oil, Transmission, Differential	9
5) Differential.....	12
6) Data	14
7) Electrical	16
8) Engine.....	19
9) Exhaust	20
10) Fluids.....	22
11) Fuel	24
12) Interior.....	25
13) Safety Equipment.....	28
14) Suspension and Suspension Bracing	30
15) Wheels & Tires	34
16) Transmission and Clutch.....	36
17) SADEV	37
18) Optional and / or Modified Components	39

1) General Notes:

This document will be updated periodically to reflect cumulative changes made to the vehicle specification. A list of all vehicle updates can be found on the Flis Performance web site: <http://flisperformance.com/>

- a) All REQUIRED TSB items are also shown in this document, as well as items that are OPTIONAL but still homologated. All parts on vehicle must be stock 2019+ Mazda MX-5 ND2 Chassis parts unless specifically listed in this document. Below is a list of all stock Mazda parts that are added during the assembly process:
 - i) Air box Cowl – N244-56-35X
 - ii) Sealed Differential – 0000-02-MS14-KT or 0000-02-MS14-SD (for SADEV)
 - iii) Brake calipers – NAYF-33-98Z and NAYF-33-99Z
 - iv) Brake caliper pins – NA5F-33-696
 - v) 2016-2018 Flywheel-PEES-11-500
 - vi) 2016-2018 Flywheel Lock Bolt-LF01-11-511
 - vii) 2016-2018 Front Clutch Cover- PE01-16-220
 - viii) Filter Body for Oil Filter- PEES-14-311
 - ix) Oil Filter Body Gasket – PEES-14-1342
 - x) Modified Stock Parts are shown in Section 18

b) The only allowed end user modifications to the car are installation of the following:

- i) FIA approved seat and seat side mounting brackets
- ii) FIA approved safety belts
- iii) **Welding of additional brackets to the Shoulder Belt Bar for Safety Belt Attachment will no longer be allowed. Please reference ND2-TSB-2022-01-13 #C - Shoulder Belt Extension Bracket - Optional**
- iv) Interior rear-view mirror
- v) Steering wheel

c) Allowable adjustments to the car are:

- i) Tire air pressure
- ii) Front anti-roll bar end link positions
- iii) Front and rear anti-roll bar end link lengths
(Option of Disconnecting Sway Bars and method of securing components found in TSB #2022-01-13 #D)
- iv) Ride height and rake (to not less than TBD by sanctioning organization ground clearance) via spring perches
- v) Damper compression and rebound
- vi) Front and rear toe
- vii) Front and rear camber
- viii) Caster

If it is not specifically listed above, no other adjustments, polishing, deburring, or modifications of any kind are allowed.

2) Body



Screen, Radiator-ND2 0000-08-D231



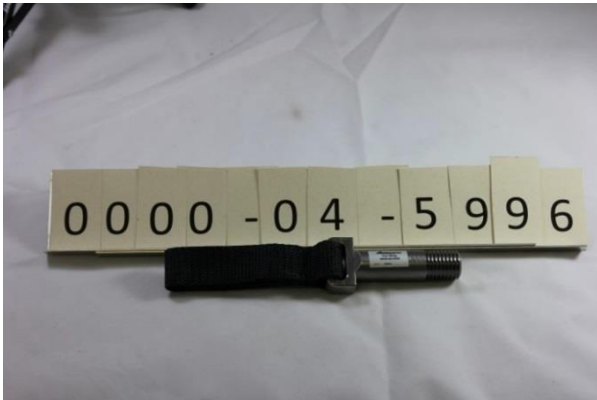
Grill, ND2 0000-08-D208



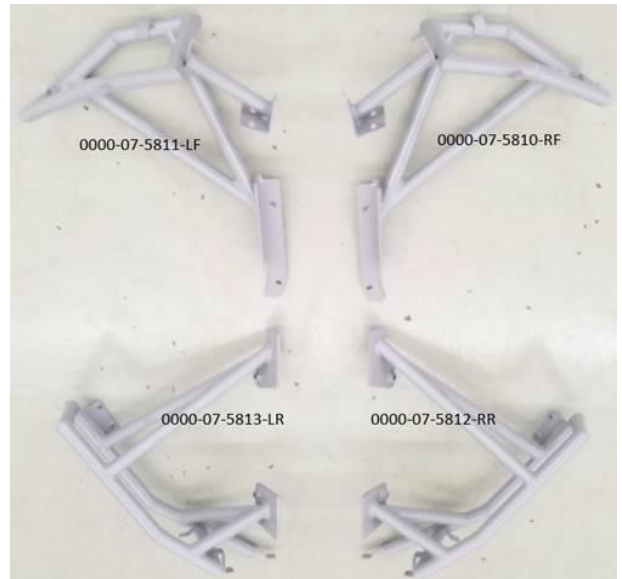
Hood / Trunk Release Wire Crush Sleeve
(front/rear access) 0000-08-5021



Hood / Trunk Release Wire (front/rear access) 0000-08-5025



Tow Hooks 0000-04-5996-SH



Fascia Supports



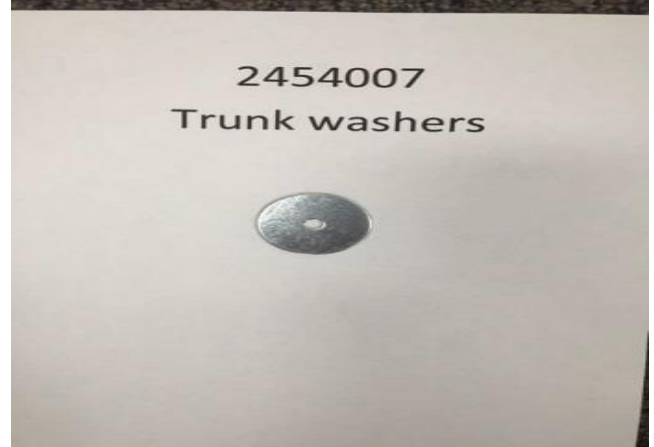
Fascia Supports – frame brackets



Fascia Support weld in bungs

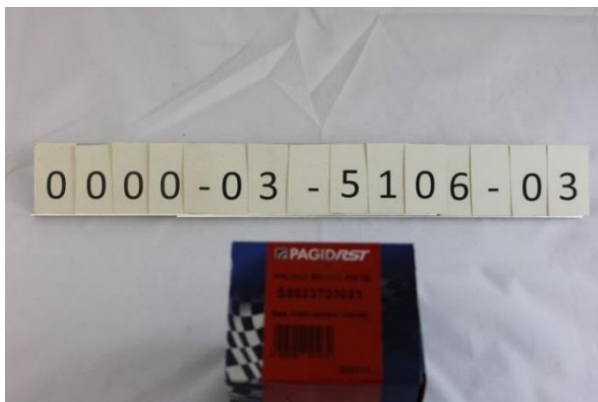


Adaptor,
Tray (Optional) –ND2
0000-08-D202



Trunk Washer 2454007

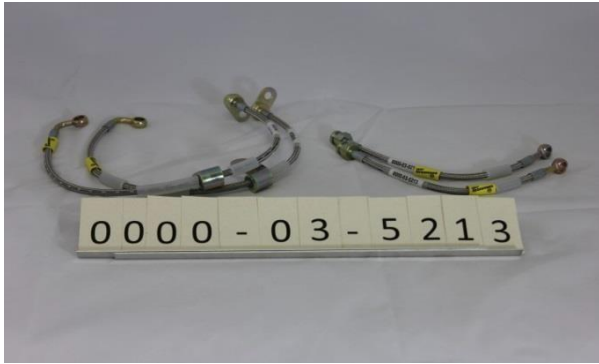
3) Brakes



Brake Pads (Front) 0000-03-5106-03



Brake Pads (Rear) 0000-03-5116-44



SS Brake Lines 0000-03-5213



Rotors LF 0000-03-5406-LT



Rotors RF 0000-03-5406-RT



Brake Duct Clamps 0000-03-5601-CL



2" Brake Duct Hose 0000-03-5601-HS (Single 34")



Brake Duct Hose (Dual) 2" Brake Duct Hose 0000-03-5601-HS (Dual 39") (Optional)



Brake Duct Hose (Dual) 2" Brake Duct Hose 0000-03-5601-HS-A (Dual 39") (Alternative - Optional)



Brake Duct Backing Plates (left) 0000-03-5601-LT



Brake Duct Backing Plates (Right) 0000-03-5601-RT



Single Brake Duct Nozzle (Fascia-Left) 0000-07-5808-LT



Single Brake Duct Nozzle (Fascia-Right) 0000-07-5808-RT



Dual Brake Duct Fog (Fascia-Left) 0000-03-5601-LTDL (Optional)



Dual Brake Duct Fog (Fascia-Right) 0000-03-5601-RTDL (Optional)



Dual Brake Duct Flange (Left) 0000-03-5601-BKLT (Optional)



Dual Brake Duct Flange (Right) 0000-03-5601-BKRT (Optional)



Dual Brake Duct Kit (Optional) 0000-03-5601-DLKT

4) Cooling: Water, Engine Oil, Transmission, Differential



Radiator-ND2 0000-08-D221 (ND2 Tank width 2-9/16" Thick)



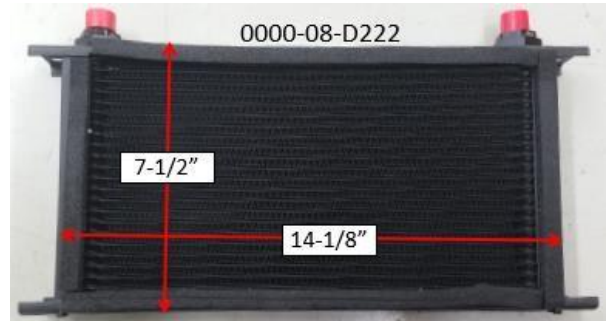
Duct, Radiator-Left-ND2
0000-01-5662-LT



Duct, Radiator-Right-ND2
0000-01-5662-RT



1.75"x24" Flap Trim (Radiator) 0000-01-566B



Oil Cooler SET 925-ND2 0000-08-D222



Engine oil cooler fittings m22- an8
0000-08-5014



Line, Oil Cooler-Long-ND2 0000-08-D223



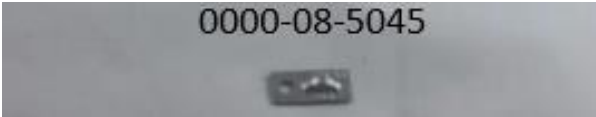
Line, Oil Cooler-Short-ND2 0000-08-D224



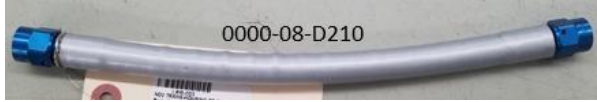
Bracket, Oil Cooler-Short-ND2 0000-08-D225



Mounting Hardware and Foam, Diff/Trans
Cooler-ND2 0000-08-D209



Zip Ty Saddles 0000-08-5045



Dash 6 Oil Line, Trans-Housing to Filter-ND2
0000-08-D210 – **NON- SADEV**



Dash 6 Oil Line, Trans-Filter to Cooler-ND2
0000-08-D211



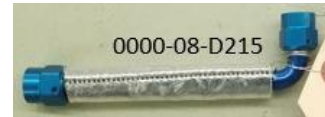
Dash 6 Oil Line, Trans-Cooler to Pump-ND2
0000-08-D212



Dash 6 Oil Line, Trans-Pump to Housing – ND2
0000-08-D213- **NON- SADEV**



Dash 6 Oil Line, Diff-Housing to Filter-ND2
0000-08-D214



Dash 6 Oil Line, Diff-Filter to Cooler-ND2
0000-08-D215



Dash 6 Oil Line, Diff-Cooler to Pump-ND2
0000-08-D216



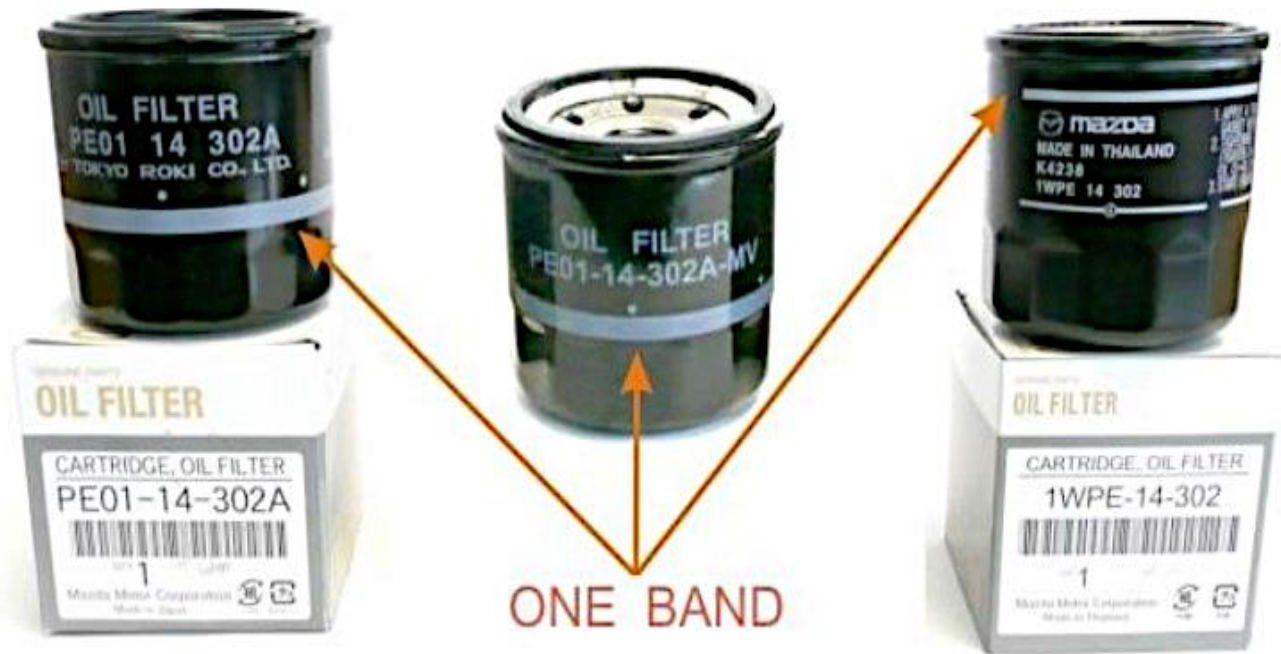
Dash 6 Oil Line, Diff Pump to Housing-ND2
0000-08-D217

SKYACTIV-G (Non-turbo) Filters

PE01-14-302A or B

PE01-14-302A -MV

1WPE-14-302



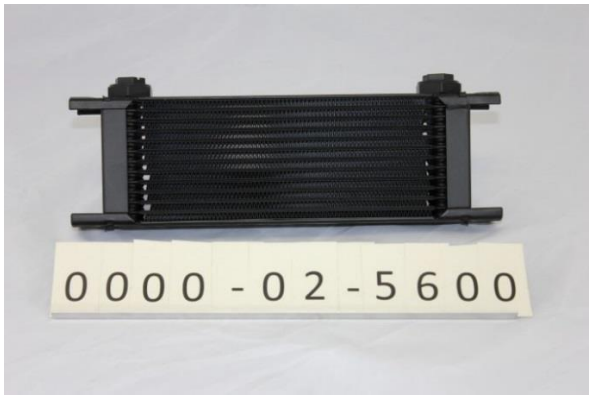
5) Differential



Diff Cover, Top with -6 0000-08-5033



0000-08-5033
Diff Cover, Bottom with Temperature Sensor



Diff & Trans Oil cooler (one each) 0000-02-5600



Diff & Trans Oil Cooler Fittings (4 per kit)
0000-02-5603



0000-08-5012-KT
Diff & Trans Oil Cooler Shroud with Fan - Top View



0000-08-5012-KT
Diff & Trans Oil Cooler Shroud with Fan - Bottom View



-6 Male to 3/8 NPT Pipe Male 0000-08-5030



Diff & Trans Fluid Transfer Pump with Viton Seals (one each)
0000-08-5031



Diff & Trans Oil Filter and Housing (one each) 0000-08-5606



Diff Pump Bracket Welded to Left Rear Frame

6) Data



AiM MXL2 Data Logger w/GPS 0000-10-9303



0000-10-9304

AiM 22 Pin Harness for MXL2



Shaft Collar 1.75", MXL2 Mount-ND2
0000-08-D230



0000-10-9305

AiM 3.5m Patch Cable



0000-10-9306

AiM PT-100 Temp Sensor for differential, transmission and engine oil temp.

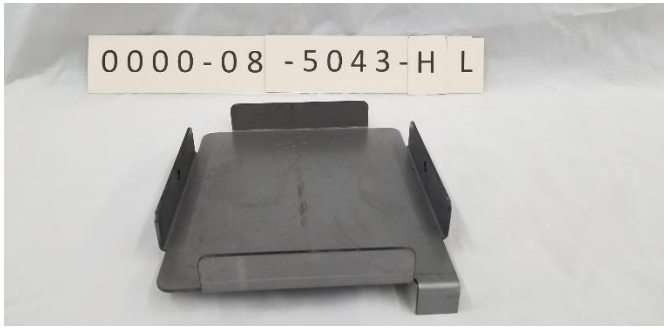


Water Pressure Sensor (Superseded by new kit – See below)



Water Pressure Sensor Kit - 0000-01-5662-WP

7) Electrical



New Battery Tray 0000-08-5043-HL



Odyssey Battery 0000-08-5043



New Battery hold down 0000-08-5043-CL



Hold Down Hardware 0000-08-5043-HD



Upgrade Battery Kit 0000-08-5043-KT



AMB Flex Transponder 0000-08-5044-TR2



ECU, Bosch MS6 Cup – ND2
0000-08-D227



Mount Assy, ECU W/Dual Lock-ND2
0000-08-D228



Adaptor Harness, ECU-ND2 0000-08-D203



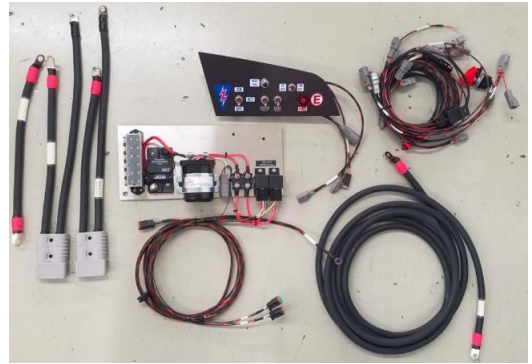
Mount Assy, ECU Adaptor-ND2 0000-08-D204



Power Distribution Block – 0000-08-5150



Harness, Start/Stop 0000-08-D234



Flis Performance Wiring Kit



Switch Panel Close-up 0000-08-D241



Switch Panel, Back Side 0000-08-D241



Rear Power Distribution Panel View 0000-08-D238



Sensor, O2-Bosch LSU 4.9-ND2 0000-08-D226



Stud, Cage Ground M8x20-ND2 0000-08-0D205



Nut, Cage Ground M8-ND2 0000-08-0D206



Speed Limiter, Pit Lane-ND2 0000-08-D233



MPI Single External Button Holder: Mazda P/N 0000-10-5660-1B



MPI Dual External Button Holder: Mazda P/N 0000-10-5660-2B

8) Engine



Oil filter Sandwich Plate 0000-01-5600-KT



Vacuum Control Unit Bracket
68_Vac_CNTRL_BKT



Engine Mount Reinforcement Bracket Left
0000-02-5702-LT



Engine Mount Reinforcement Bracket Right
0000-02-5702-RT



Engine Bracket Left 0000-02-5712-LT



Engine Bracket Right 0000-02-5712-RT



Bosch Throttle Body Kit 0000-08-D200

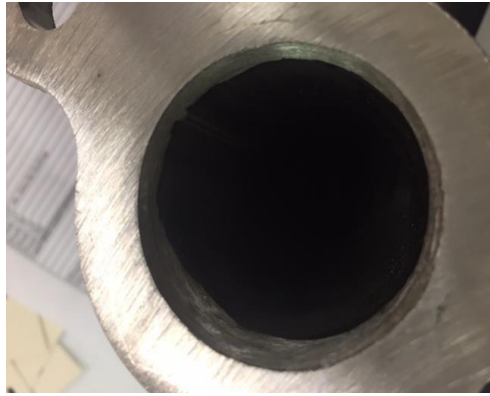
9) Exhaust



Header 0000-06-5410



Header 0000-06-5410



Header 0000-06-5410



Header 0000-06-5410



Header 0000-06-5410



Mid Pipe 0000-06-5430



Muffler 0000-06-5440-01



Muffler 0000-06-5440-01



Muffler Delete Pipe (Required) FLIS_MFLR_DLT

10) Fluids



Idemitsu Pro Racing Engine Oil Full Synthetic 5W-40
Part Number: 0000-MS-5w40-QT



Idemitsu Pro Racing Gear Oil 75W-90
Part Number: 0000-MS-7590-QT
Transmission is approximately 5 quarts, and differential is approximately 2 quarts.

NON- SADEV



SADEV Transmission Lubricant - Idemitsu Pro Racing Gear Oil 75W-90

SADEV is approximately 2 quarts (Dry System: New installation including lines and coolers) (1.5 quarts for Wet System)

(Brake Fluid Brand - OPEN)

To run the Mazda MX-5 Cup Series, the Brake Fluid must meet the performance requirements of DOT 4 OR HIGHER



Engine Coolant 0000-08-5028

OR

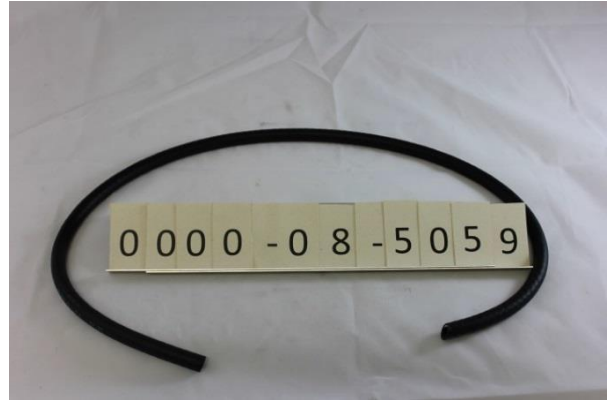


Mo Cool by Motul

11) Fuel



Fuel Pump Out Kit 0000-06-5210 Only **RED** fuel tee is allowed, **black** tee must **NOT** be used



Fuel Vent Hose, 1/4" 0000-08-5059



Fuel Tube Hose Clamps 0000-08-5060



Fuel Tube, 1" Stainless Steel 0000-08-5061



Fuel Tube, 1" I.D x 6" Length Tygon Tubing 0000-08-5062

12) Interior



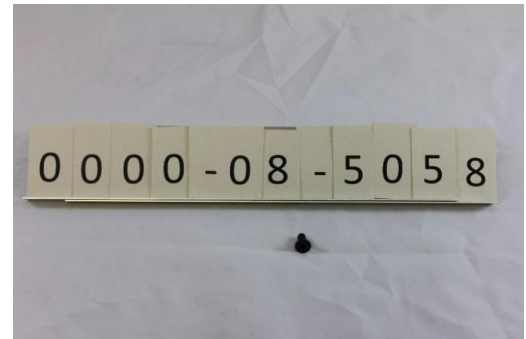
Ballast box 0000-08-5053



0000-08-5128-05
5 lbs Ballast Plate (1/4" Steel) 0000-08-5128-05



0000-08-5128-10
10 lbs Ballast Plate (1/2" Steel)
0000-08-5128-10



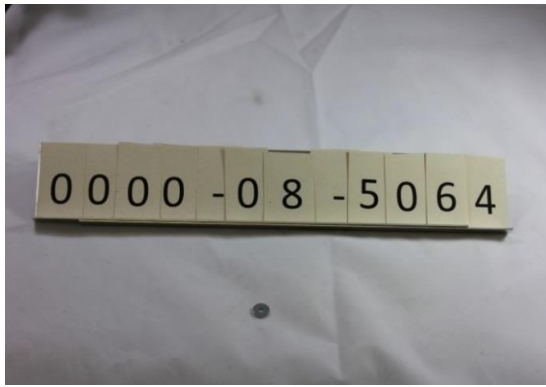
Floor Pan Bolts, M6 x 1.0 x 16mm Flat Allen 0000-08-5058



1.15Kg Ballast Plate 0000-08-5128-1.1K-JP



1.15Kg Ballast Plate 0000-08-5128-1.1K-JP



Bulk Head Fastener, M4 Flat Washer
0000-08-5064



Bulk Head Fastener, M4 Nyloc Nut
0000-08-5065



Bulk Head Fastener, M4 x 12mm
0000-08-5066



Dead Pedal Assembly, 1/8" Steel Plates
Welded to Stock Panel 0000-08-5074-ASM



Floor Pan, 1/8" Aluminum 0000-08-5076-LT



Rear Bulk Head Center, 0.063" AL
0000-08-5078



Rear Bulk Head Fuel Cover, 0.063" AL 0000-08-5079



0000-08-5080

Rear Bulk Head Left, 0.063" AL
0000-08-5080



0000-08-5081

Rear Bulk Head Right, 0.063" AL
0000-08-5081

Roll cage 0000-08-5082

(See FIA Homologation Safety
Cage Certificate, IMSA
20150723_MAZDA_MX-5)



0000-08-5083

Steering wheel adaptor 0000-08-5083



7/8 Grommet, Bulkhead, 0000-08-5095

13) Safety Equipment



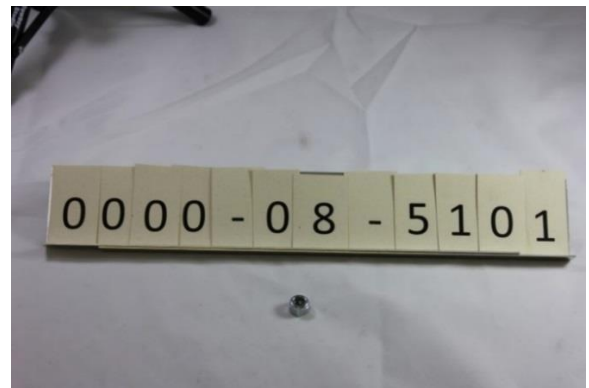
Right Side Net 0000-08-5106



Driver Door Net Mounting Heim 0000-08-5099



Driver Door Net Mounting Jam Nut
0000-08-5100



Driver Door Net Mounting Nut (Nyloc)
0000-08-5101



0000-08-5102
Driver Door Net Rod Assembly 0000-05-5102



Fire system 0000-08-5103



Bracket, Fire Bottle w/Clamps
ND2 0000-08-D201



Leg Brace / Wire Cover Panel 0000-08-5105



0000-08-5131

Leg Brace Stand-Off (Rear) 0000-08-5131

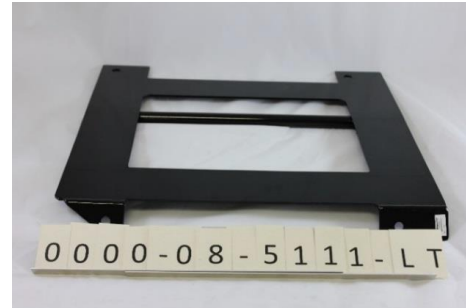


0000-08-5130

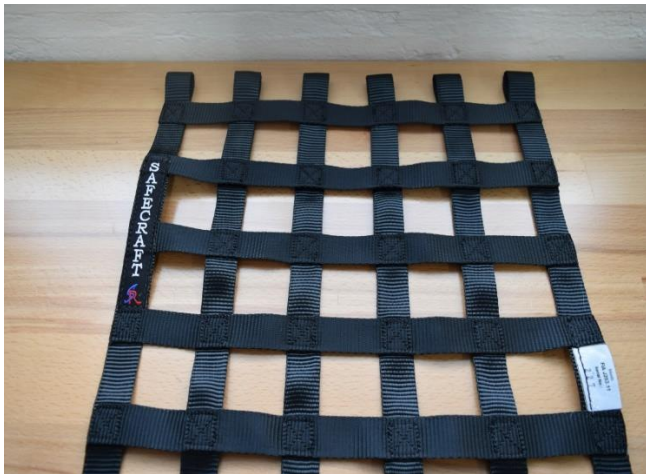
Leg Brace Stand-Off (Front) 0000-08-05130



Roll Bar Padding 0000-08-5107



Seat Mount Baseplate 0000-08-5111-LT



FIA Compliant Driver Door Net 0000-08-5097



Flis Performance Shoulder Belt Extension Bracket (Part #0000-08-5110-FPSH) Optional

14) Suspension and Suspension Bracing

0000-04-5901

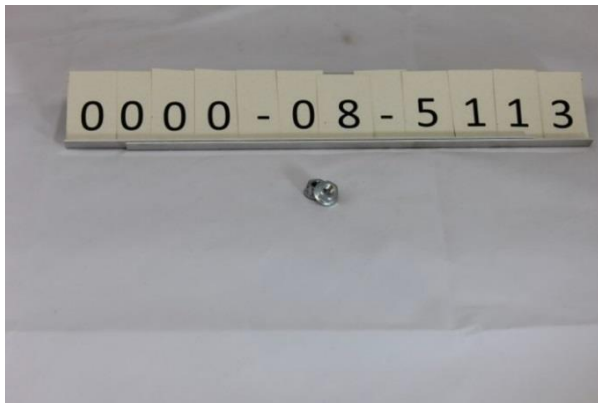
Differential Bushing Inserts



Differential Bushing Inserts 0000-04-5901



Lower Strut Tower Brace JIS Nut 0000-08-5112



Upper Strut Tower Brace Flanged Nut
0000-08-5113



Sway Bar End Links – Front
0000-04-5495

NOTE: The front sway bar end link attachment washers' sequence, may be altered from how the car was delivered which are 4 in total per side of the car. The total number of four washers may not change per side, but their location (top to bottom or bottom to top) may. The homologated washer is still the only allowed washers



0000-04-5496
Sway Bar End Links – Rear 0000-04-5496



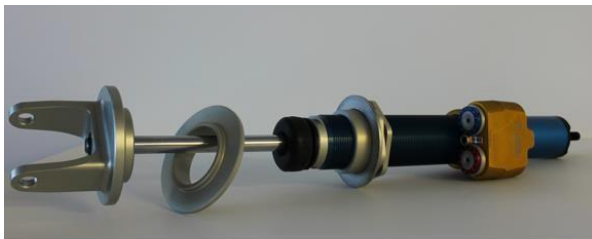
1.25" Front Sway Bar Bushings 0000-04-5606BS



0000-04-5606-FT
Front Sway Bar 0000-04-5606-FT



Front Sway Bar 0000-04-5606-FT



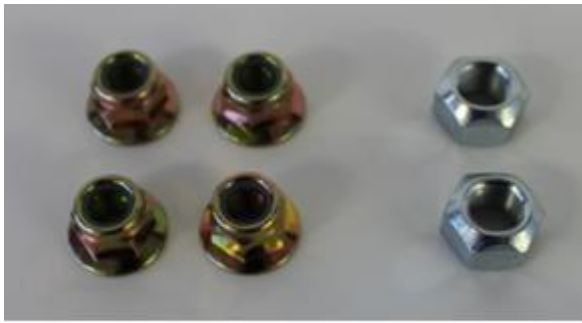
0000-04-5617
Damper – Rear 0000-04-5617, shown with intermediate
spring perch and Bump Stop Mazda Part # F151-28-775B



0000-04-5616
Damper – Front 0000-04-5616, shown with intermediate
spring perch and Bump Stop

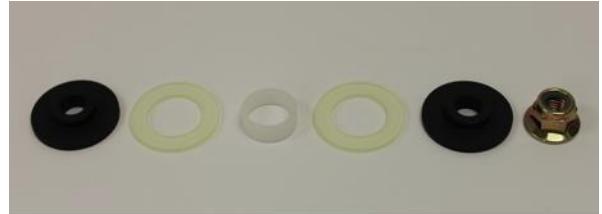


Damper Rubber Mazda Part # F151-28-775B



0000-04-5619

Damper Lock Nut Kit, 4 Upper, 2 Rear Lower Nuts



0000-04-5618

Damper Top Mount Kit 0000-04-5618



0000-08-5116

Rear Lower Damper Lock Nut, 0000-08-5116



Strut Tower Brace 0000-04-5626



Strut Tower Brace 0000-04-5626



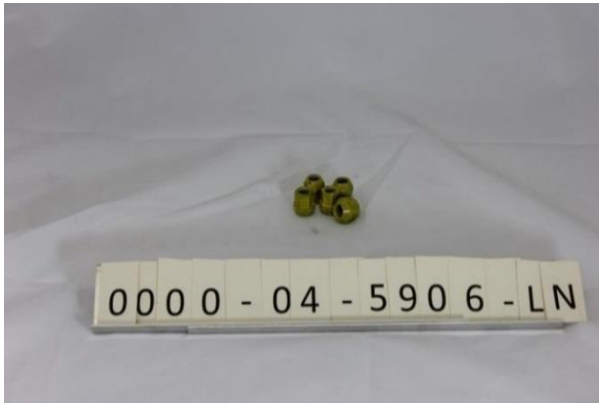
Strut Tower Brace 0000-04-5626



MSI Wheel Studs 0000-04-5905



ARP Wheel Stud – 100-7719 (OPTIONAL)



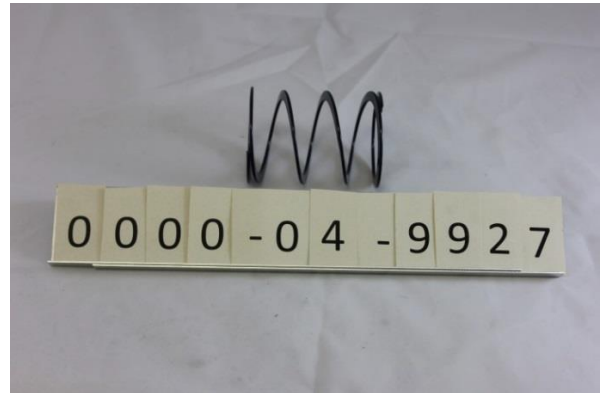
Lug Nuts 0000-04-5906-LN



Rear Spring 300 2.25 ID X 7" 0000-04-5300-07



Front Spring 500 2.25 ID X 7" 0000-04-5500-07



Helper Spring 0000-04-9927



Torrington Bearing 0000-08-5119

15) Wheels & Tires



Tire: MX-5C BFG Dry, 215/610R17 g-Force



Tire: MX-5C Michelin Competition Wet 20/61-17 P2G



Tire: MX-5C Michelin Competition Wet 20/61-17 P2G
View 2



Tire: MX-5C Michelin Competition Wet 20/61-17 P2G
View 3



0000-04-5806

Rays 17x7-1/2 x 40 Wheel, Face 0000-04-5806



0000-04-5806

Wheel, Back 0000-04-5806



0000-04-5806

Wheel, Inside 0000-04-5806

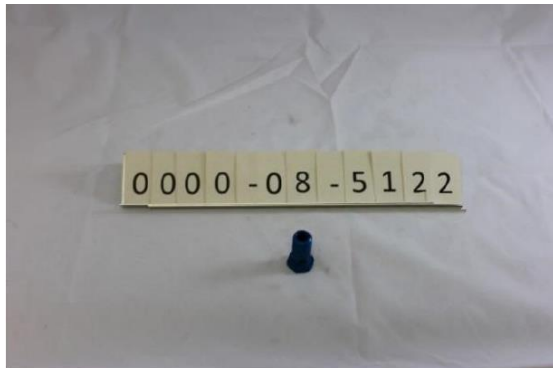
16) Transmission and Clutch



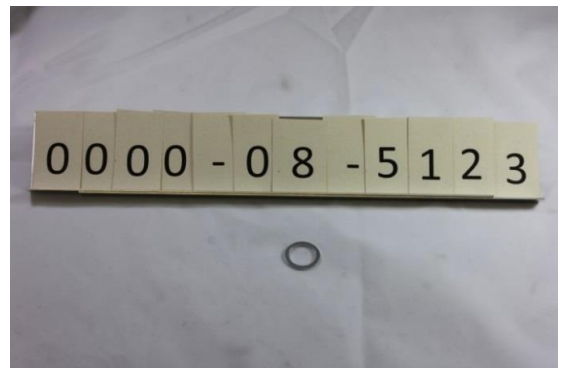
Transmission Stud 0000-02-STUD-GM **NON-SAEV**



Banjo Adapter 0000-08-5121 – **NON-SAEV**



Banjo Bolt 0000-08-5122 **NON-SAEV**



Banjo Bolts Kit (Crush Washer for Banjo Bolts and Cooler Lines) 0000-08-5123 **NON-SAEV**



-6 Male to -8 Female Adaptor 0000-08-5124 **NON-SAEV**



90* -6 Male to 3/8 NPT Pipe Male 0000-08-5125



Clutch kit 0000-02-5006-SS **NON-SADEV**



Clutch kit 0000-02-5006-SS **NON-SADEV**

17) SADEV



SADEV Gearbox 0000-02-5901-SD



Banjo Fitting Kit-inline filter 0000-02-5902-BJ



Wiring for SADEV – 0000-10-5916



Shift Rod with Load Cell
0000-02-5903



Drive Shaft 0000-02-5902



DriveShaft Bolt Top Hat Kit 0000-02-5902-BT



DIFFERENTIAL-SEALED 0000-02-MS14-SD



OEM PRESSURE PLATE - PE31-16-410 (ND.1 & ND.2)



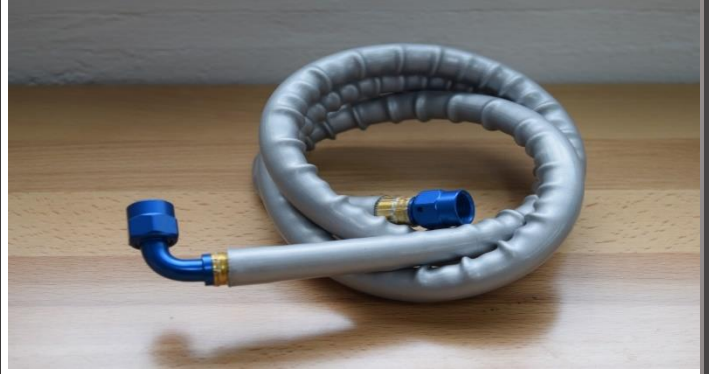
ACT CLUTCH DISC - 0000-02-5438-SS (ND.2 SADEV ONLY)



OEM RELEASE BEARING - LF01-16-510 (ND.1 & ND.2)



Dash 6 Gearbox to Filter Hose 0000-02-5902-L1



Dash 6 Gearbox to Pump Hose 0000-02-5902-L2

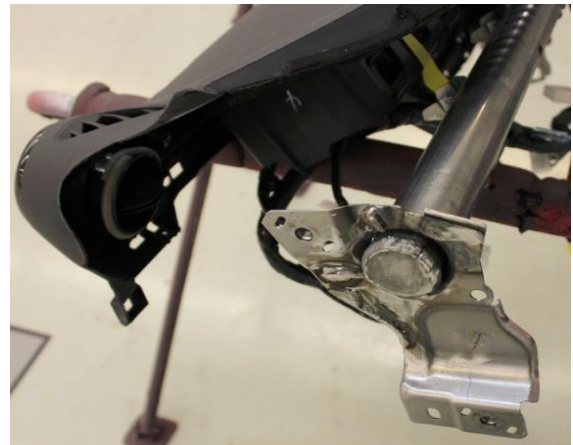


The only Homologated Shift Linkage position, is the second mounting hole from the top, as pictured above. No exceptions.

18 Optional and / or Modified Components



Trimmed Yaw Sensor Bracket



Right Side Dash Bar Modification / Trim



Left Side Under Dash Modification / Trim



Right Side Under Dash Modification / Trim

Optional polycarbonate windscreen and brace

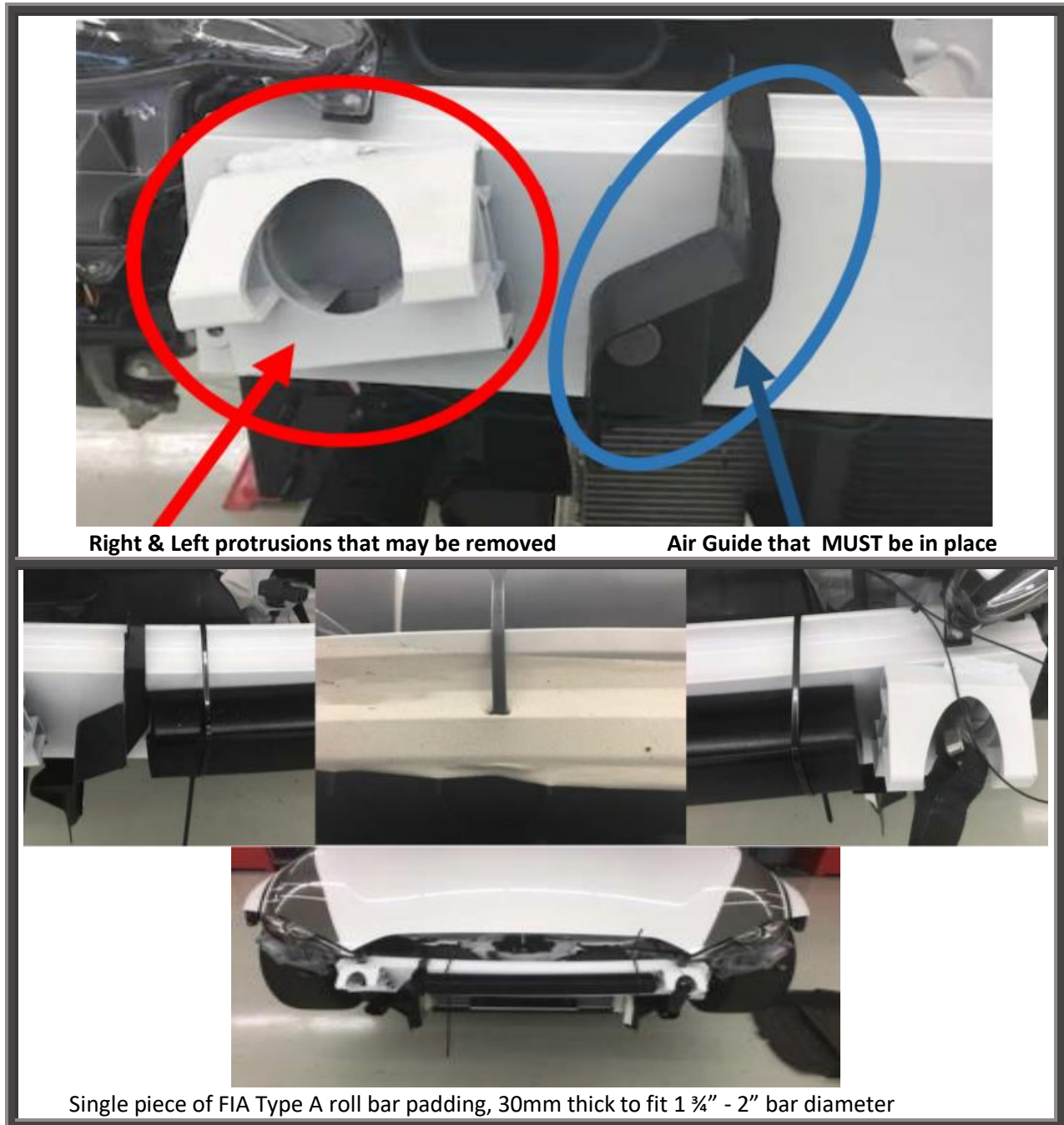


Polycarbonate Windscreen 0000-07-5116-PT



Brace 0000-07-5116-BR

Optional*: 2017 Mazda MX-5 Update: Bumper Beam Protrusions & Foam TSB

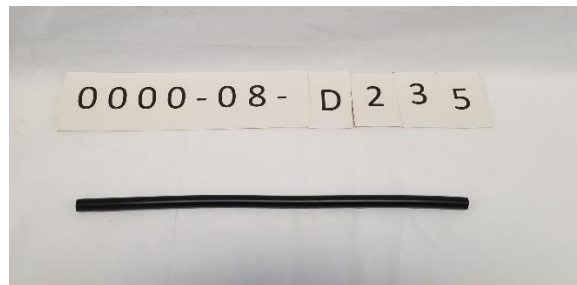
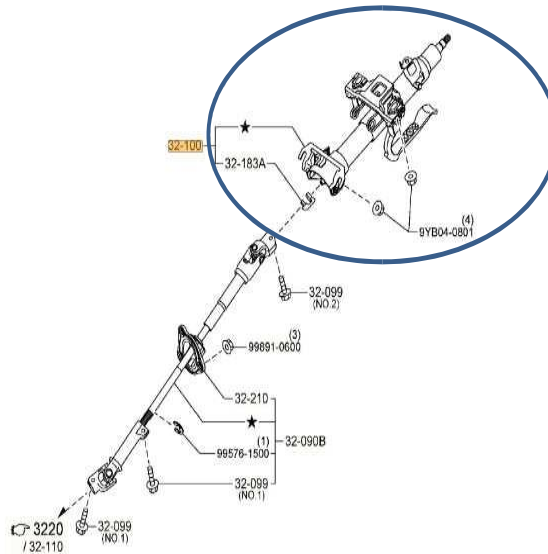


Optional: Mazda MX-5 Cup Steering column update to 2019 + (tilt and telescoping) specifications

Optional changes to the Mazda MX-5 Cup Car steering column with the addition of the telescoping feature to assist with driver comfort.

1. Part number ND6N-32-100 (2019+ Model year tilt & telescoping steering column) may now be substituted for NA1J-32-100 (2016 – 2018 tilt steering column). When updating to the 2019 + style column, you will also need three additional parts. Mazda part numbers:

- a. 0000-08-D230 Updated MXL2 mount
- b. 0000-08-D234 Modified start/stop wiring harness
- c. 0000-08-D235 Fire bottle line



Fire bottle line - 0000-08-D235

Optional: Mazda MX-5 Cup Cooling management tools



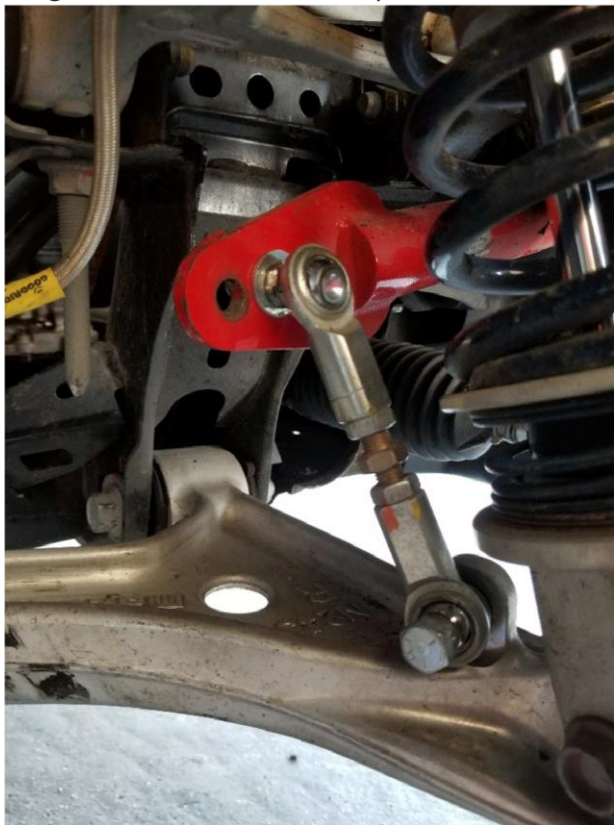
½ inch cooling system bypass cap (Mazda Part -0000-08-D237)



3/8 cap (Mazda Part - 0000-08-D237)

2017 Mazda MX-5 Update: Front sway bar end link washer placement

The front sway bar end link attachment washers' sequence, may be altered from how the car was delivered which are 4 in total per side of the car. The total number of four washers may not change per side, but their location (top to bottom or bottom to top) may. The homologated washer is still the only allowed washers.



Optional: Mazda MX-5 Cup Radiator Cap Safety wire hole(s)



C&R High Pressure Radiator Cap0000-08-D236 -16LBS

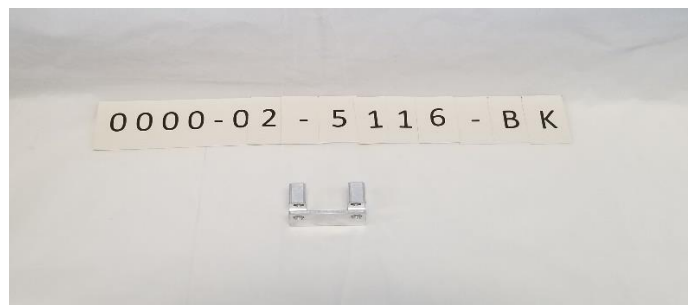


C&R High Pressure Radiator 30 LB Cap 0000-08-D242 -30LBS

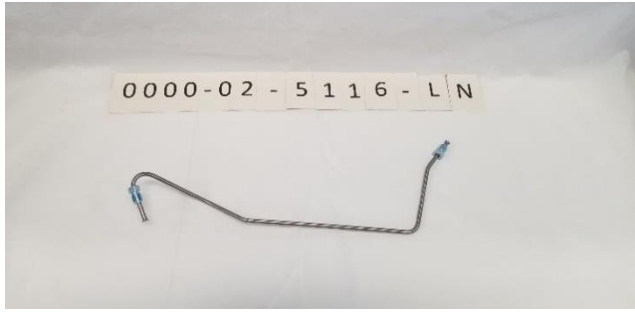
Optional: Mazda MX-5 Cup slave cylinder option



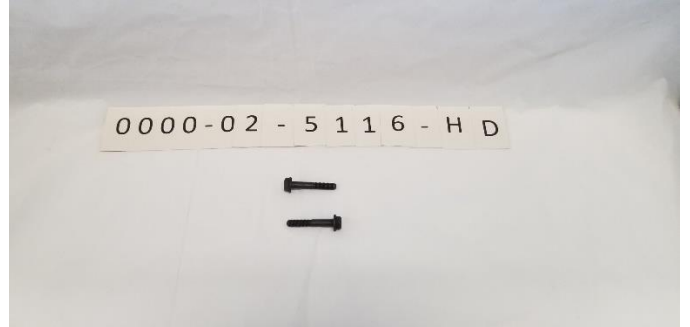
Slave Cylinder - 0000-02-5116



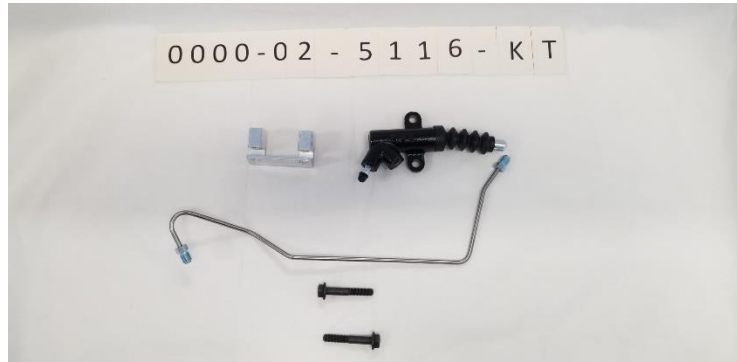
Slave Cylinder Bracket - 0000-02-5116-BK



Slave Cylinder Line - 0000-02-5116-LN



Slave Cylinder Hardware - 0000-02-5116-HD



Slave Cylinder Kit - 0000-02-5116-KT

ND2 TSB 2020-08-19 Mazda MX-5 Cup SADEV Shift Knob Alternative OPTIONAL

Optional: Mazda MX-5 Cup SADEV Shift Knob

This TSB describes: The purpose of this TSB is to allow competitors to use the Flis Performance Shift Knob as the only alternative shifter from the original SADEV Shift Knob.



This will be the only approved Mazda MX-5 Cup Series alternative Shift Knob. The Flis Performance Shift Knob is designed for drivers' comfort by extending the length.



Diffuser Tray: Optional



Diffuser - 0000-08-D243

Differential and Gearbox Cooling Lines update: Optional



-6 AN Female to -8 Male AN (Gear Box) 0000-08-D801



3/8" 90 Deg. NPT to -8 AN (Gear Box Pump) 0000-08-D802



-8 AN Filter 0000-08-D804



-8 AN Female to -8 AN Male with 1/8 Sensor Hole 0000-08-D805



-8 AN Male to 18mm Male (Diff OUT) 0000-08-D806



3/8" NPT Male to -8 AN Male with 1/8" Sensor Hole (Diff Pump) 0000-08-D807



3/8" NPT Male to -8 AN Male (Diff Pump) 0000-08-D808



Dash 8 GB Out to GB Pump In (FLIS - 045) 0000-08-D809 48" (Optional)



Dash 8 GB Pump Out to GB Cooler in (FLIS - 046) 0000-08-D810 37" (Optional)



Dash 8 GB Cooler Out to GB In (FLIS - 047) 0000-08-D811 100" (Optional)



Dash 8 Diff out to Diff Pump In (FLIS - 048) 0000-08-D812 24" (Optional)



Dash 8 Diff Pump Out to Diff Cooler In (FLIS - 048) 0000-08-D812 24" (Optional)



Dash 8 Diff Cooler Out to Diff In (FLIS - 049) 0000-08-D813 9" (Optional)

Differential & Gearbox Hose Kit Update

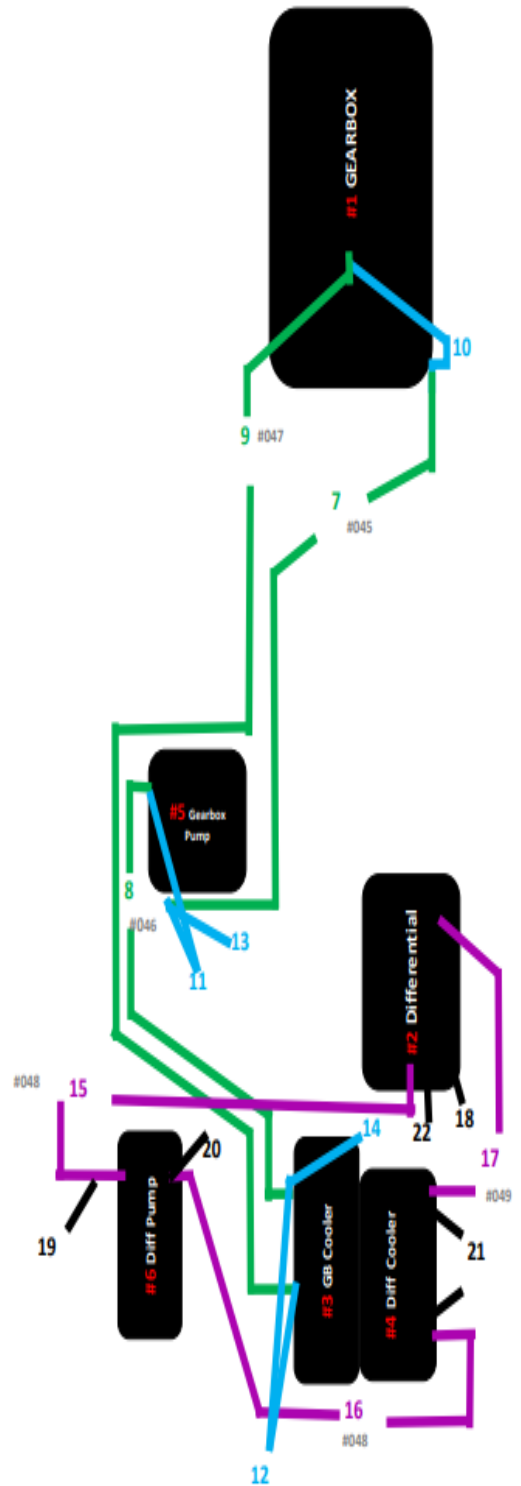
#	Description
1	Gearbox (GB)
2	Differential (Diff)
3	GB Cooler
4	Diff Cooler
5	GB Pump
6	Diff Pump

GearBox Hoses		Part #	Length	Fitting	Fitting
7	GB Out to GB Pump In (FLIS - 045)	0000-08-D809	48"	ST	ST
8	GB Pump Out to GB Cooler in (FLIS - 046)	0000-08-D810	37"	ST	90
9	GB Cooler Out to GB In (FLIS - 047)	0000-08-D811	100"	90	90SW

GearBox Fittings		Part #	QTY	Size	Size
10	-6 AN Female to -8 Male AN (GB)	0000-08-D801	2	-6	-8
11	3/8" 90 Deg. NPT to -8 AN (GB Pump)	0000-08-D802	2	3/8" NPT	-8
12	-8 AN Male to 22mm Male (GB Cooler)	0000-08-5014	2	-8	22mm
13	-8 AN Filter	0000-08-D804	1	-8	
14	-8 AN Female to -8 AN Male with 1/8 Sensor Hole	0000-08-D805	1	-8	-8

Differential Hoses		Part #	Length	Fitting	Fitting
15	Diff out to Diff Pump In (FLIS - 048)	0000-08-D812	24"	45	90SW
16	Diff Pump Out to Diff Cooler In (FLIS - 048)	0000-08-D812	24"	45	90SW
17	Diff Cooler Out to Diff In (FLIS - 049)	0000-08-D813	9"	45	90SW

Differential Fittings		Part #	QTY	Size	Size
18	-8 AN Male to 18mm Male (Diff Out)	0000-08-D806	1	-8	18mm
19	3/8" NPT Male to -8 AN Male with 1/8 Sensor hole (Diff Pump)	0000-08-D807	1	3/8" NPT	-8
20	3/8" NPT Male to -8 AN Male (Diff Pump) - (FBM5007)	0000-08-D808	1	3/8" NPT	-8
21	-8 AN Male to 22mm Male (Diff Cooler) - (22-M22AN00-SE)	0000-08-5014	2	-8	22mm
22	-8 AN Filter	0000-08-D804	1	-8	





Diff & Trans Oil Filter Housing (one each) 0000-02-5606

Please reference Mazda MX-5 Cup Car Technical Service Bulletin #2021-04-23 #2

Optional: Replacement and or Removal of Differential and Gearbox Filters